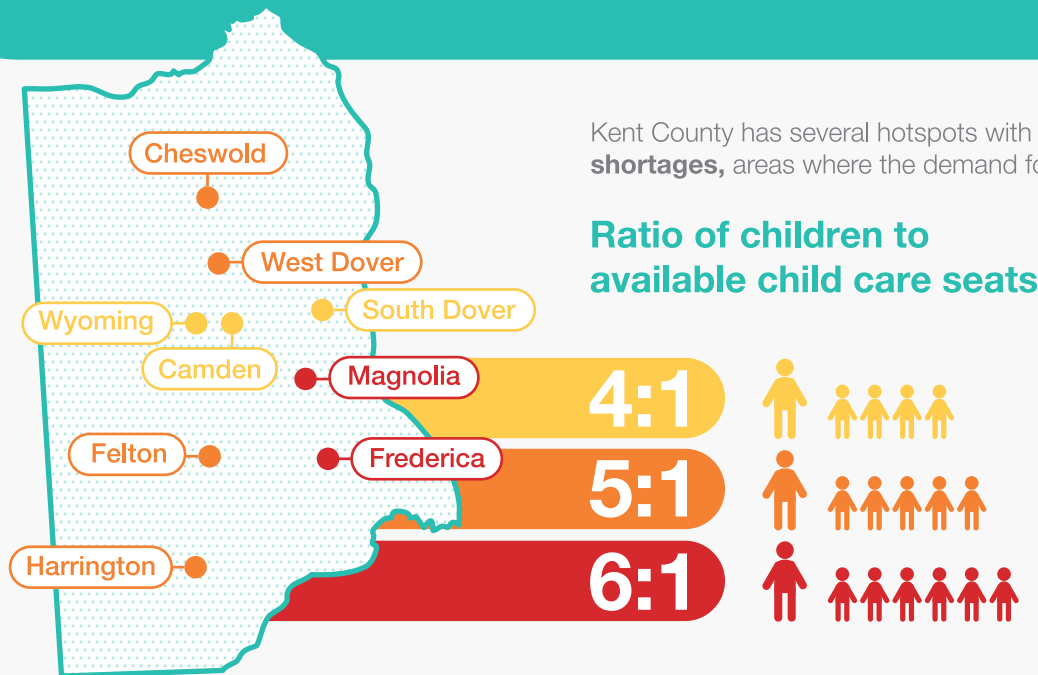


The Breaking Point: 3 Children for Every 1 Available Licensed Child Care Seat in Kent County



Kent County
Average

3:1

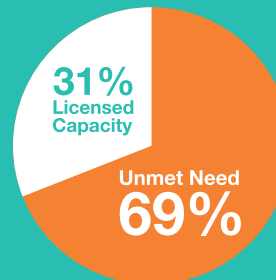
Statewide
Average

2:1

Over Two Thirds of Kent County
Children Are Without Access
to Early Childhood Education

24,135 Total estimated
children ages 0-9

Available child
care options
can serve up
to **7,470 kids**



Leaving nearly
16,665 kids not
being served

Housing Prices and Child Care Costs Push Kent County Families to the Brink

Crushing costs force families into **difficult decisions**:



Average Statewide Cost Per Month



Child care
two children

\$2,660

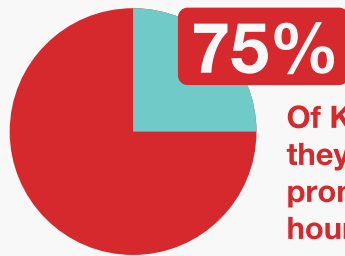


Housing: two
bedroom unit

\$1,450



Hearing From Kent County Parents



Of Kent County families said they are turning down a job or promotion, cutting back on hours, or leaving the workforce

“Due to my income, I am **not eligible** for any state assistance with child care.”

Kent County families on what would make it easier to work, go to school, or run a business:

“I worry about the cost of childcare but also recognize teachers are not paid anywhere near what they should be paid.”

75%
Said more affordable child care



65%
Said financial support for child care from my employer

“[My employer offers] on-site childcare, however, the wait-list was a year and it only lasted through Pre-K. I need childcare for the days my child has off and my husband and I don’t.”

Voices From Kent County Employers

Delaware employers lose an estimated **\$415 million annually** due to employee turnover and absenteeism due to child care challenges

Revenue Loss from Staffing Disruptions

“I’m experiencing **unusual staff turnover** [due to issues with child care], which is costing the business money.”

86%
Of Kent County employers said child care challenges have caused employees to arrive late or miss work entirely



71%
Of Kent County employers heard from their employees that child care is hard to find

Operational and Scheduling Disruptions

“I have adult employees who have had **child care issues**. Issues include: reliability of babysitter, not being able to find care after 4 p.m. and waitlists that are over a year long for daycare.”

Business Growth Constraints

57%

Of Kent County employers said child care challenges have caused a decline in overall productivity



“Child care [issues] are a barrier because my employees are **less able to work unconventional hours** due to lack of child care available at those hours.”

Workforce Underutilization

43%

Of Kent County employers said child care challenges have caused employees to reduce their hours



“Families are having to **decide between working and putting food on table for taking care of their child**.”