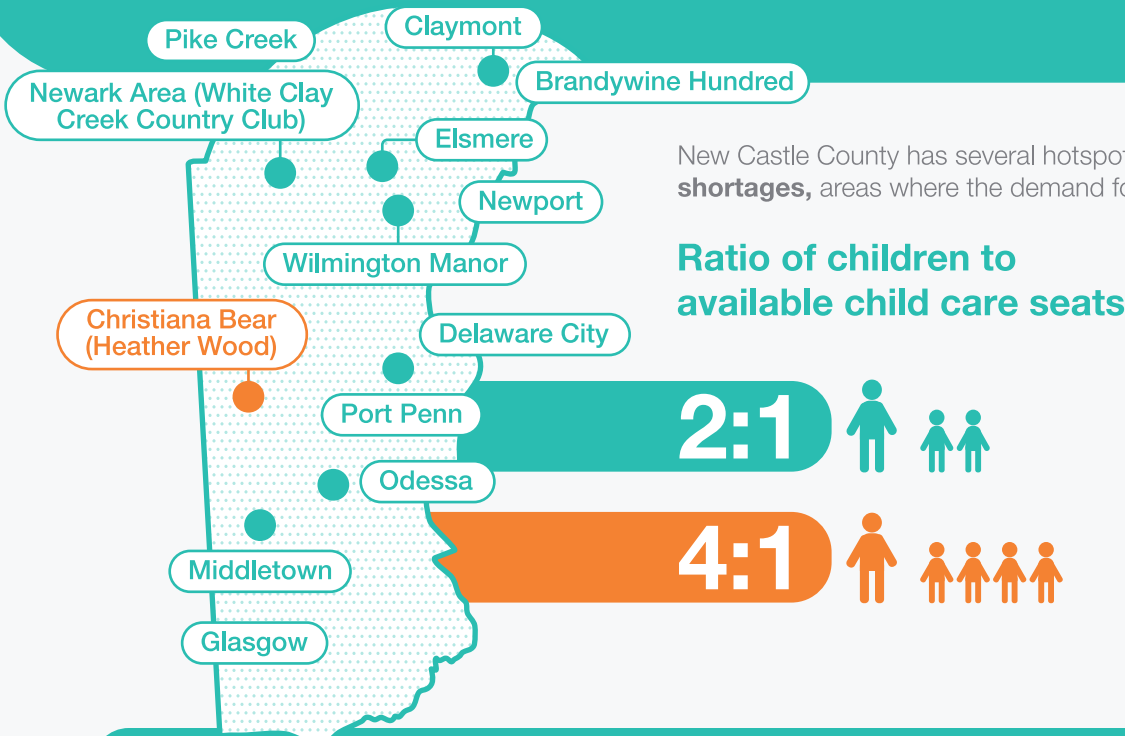


The Breaking Point: 2 Children for Every 1 Available Licensed Child Care Seat in New Castle County



New Castle
County Average

2:1

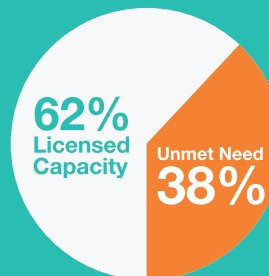
Statewide
Average

2:1

Over One Third of New Castle County
Children Are Without Access
to Early Childhood Education

63,899 Total estimated
children ages 0-9

Available child
care options
can serve up to
39,614 kids



Leaving nearly
24,285 kids not
being served

Housing Prices and Child Care Costs Push New Castle County Families to the Brink

Crushing costs force families into **difficult decisions**:



Average Statewide Cost Per Month



Child care
two children

\$2,660

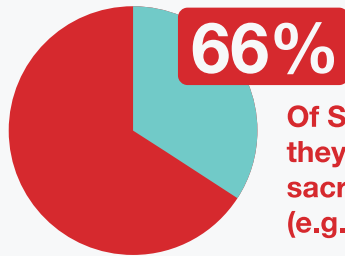
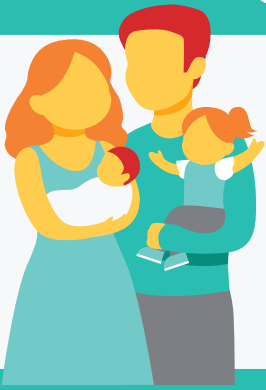


Housing: two
bedroom unit

\$1,450



Hearing From New Castle County Parents



Of Sussex County families said they are taking on debt and/or sacrificing savings/goals (e.g., buying a home).

"Any/All **disposable income** goes to **child care and paying down debt**. That is it. We can't spend money at local business for anything extra with **all our money tied**

“Covering the cost of child care is a huge burden on my family and causes a lot of financial stress... More support should be offered to working families.”

New Castle County families on what would make it easier to work, go to school, or run a business:

77%
Said more affordable child care



62%
Said family-friendly policies from my employer (e.g., flexible work hours, paid parental leave, on-site childcare)

“I know they can't increase FSA but [my employers] do operate a day care that is affordable but we can't get a spot. We have been on the waiting list for 3 years. Our kid will hit 5 never getting off it.”

Additionally, families also said extended or nontraditional child care hours, financial support from employers, and family-friendly workplace policies would help

Voices From New Castle County Employers

Delaware employers lose an estimated **\$415 million annually** due to employee turnover and absenteeism due to child care challenges

Operational and Scheduling Disruptions

“[We] had an employee who received a **promotion** and then **lost her state child care support**.”

89%
Of New Castle County employers heard from their employees that **child care is too expensive**



78%
Of New Castle County employers said **child care challenges have caused employees to arrive late**

Revenue Loss from Staffing Disruptions

“We have a number of employees who have to **arrive late/leave early** due to the **hours of child care**.”

Workforce Underutilization

48%

Of New Castle County employers said **child care challenges have caused employees to reduce their hours**

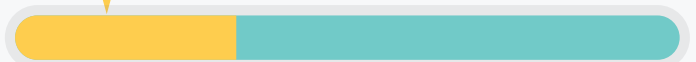


“The **cost and wait list** for daycare centers are **so long** that an employee must **resign or extend their leave of absence** until a spot can be found but have **little to no consistent pay** to start due to work missed.”

Business Growth Constraints

33%

Of New Castle County employers said **child care challenges have caused a decline in overall productivity**



“Affordable, reliable, and flexible child care isn't just a family issue—it's a **productivity issue**... But when **child care breaks down**, **productivity suffers**, and **businesses feel it**. Supporting working families helps retain talent, strengthen teams, and ultimately drives business and economic success.”