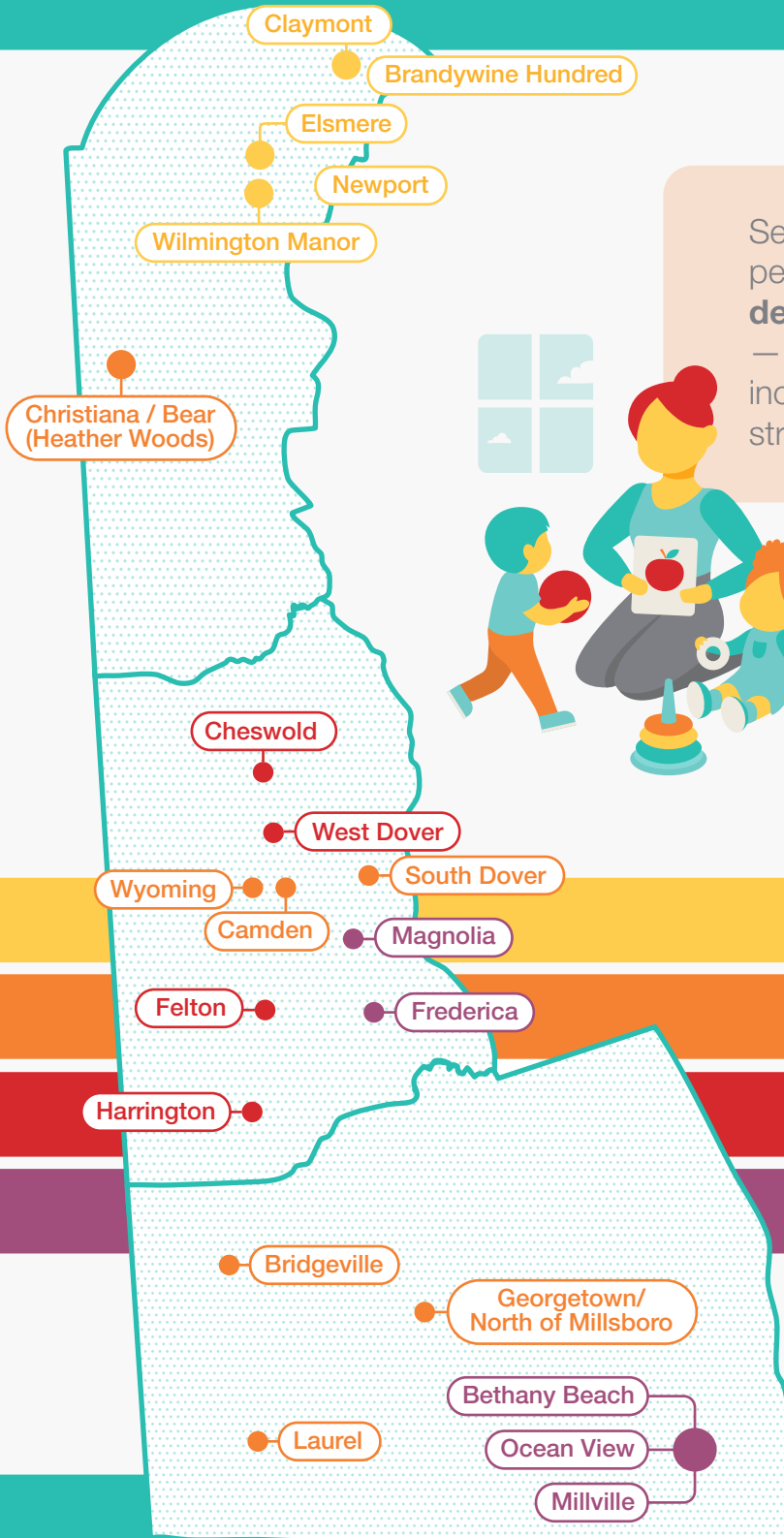


# The Breaking Point: 2 - 6 Children for Every 1 Available Licensed Child Care Seat in Delaware



Severe **child care shortages** persist across Delaware, with **demand far exceeding supply** — limiting workforce participation, increasing costs for families, and straining local economies.



## Ratio of children to available child care seats

2:1



4:1



5:1



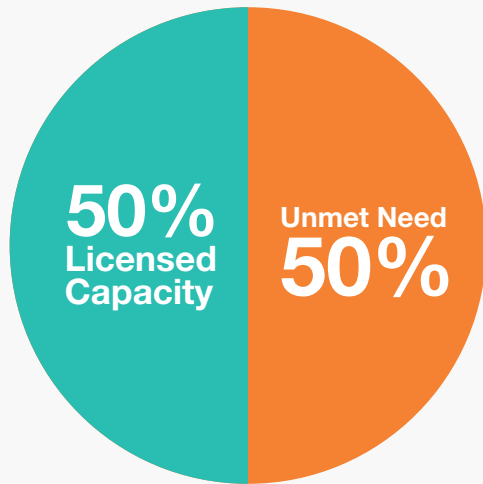
6:1



Statewide Average

2:1

# Half of Delaware Children Are Without Access to Early Childhood Education



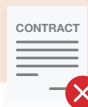
~109,000

Total estimated  
children ages 0-9

Available child care options can serve up to ~54,000 kids leaving nearly ~55,000 kids without access

## Housing Prices and Child Care Costs Push Delaware Families to the Brink

Crushing costs force families into **difficult decisions**:



Turning down jobs



Cutting work hours



Delaying their own education



Considering leaving Delaware altogether

Average Statewide  
Cost Per Month



Child care  
two children



Housing: two  
bedroom unit

\$2,660



\$1,450

Without Access  
to Early Care...

- Parents drop out of the workforce
- Local business suffers
- Children don't get the head start they need



**Note:** Communities were highlighted using different indicators to reflect local conditions. In Kent and Sussex Counties, selections are based on child-to-seat ratios; in New Castle County, selections are based on the number of children not served, where ratios are more similar.